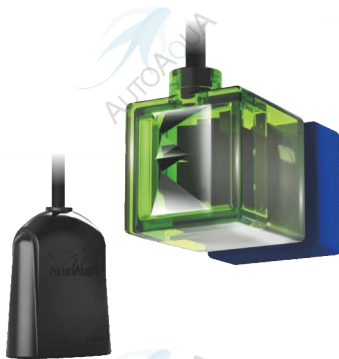




# Smart ATO Lite G2

## Manual



---

Model

SATO-266P

List of Parts (Can Be Purchased Separately)

Item	Picture	Description
Smart ATO Lite G2 Controller		<ol style="list-style-type: none"> <li>1. Auto Top Off with Square Dual Sensor</li> <li>2. Max. Mounting Thickness : 1/2 inch (12.7 mm)</li> </ol>
Universal Power Adapter		<p>Input : 100-240 VAC 50-60 Hz Output : DC 12 V / 1 A</p>
DC Refill Pump		Head : 8.2 feet (250 cm)
Universal Tube Holder		<p>For rimmed or rimless aquariums up to 1/2 inch (12.7 mm)</p>
Siphon Break		A connector to break the siphon
Tubing 6.5 feet (200 cm)		Used with DC refill pump

## Installation

1. Mount the square dual sensor on the tank/sump with the magnet, and adjust the lower sensor to the desired water level.\*
2. Connect one tube with the pump. Plug the siphon break into tubes, keep it higher than the water level of the reservoir, and set up the water tube with the universal holder.
3. Connect both of the DC pump and power adapter with the controller and then connect power.

\*Please set the sensor away from water outlet and direct light to avoid bubble interference or malfunctions.



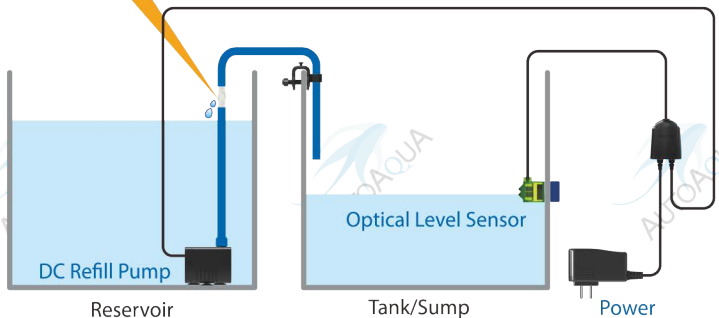
Caution : Risk of Injury from Strong Magnets



Siphon break must be higher than the water level in the reservoir.

**Air In :** Siphon break allows air in to break the siphon when the pump turns off.

**Water Out :** Water drops out of the hole are normal when the pump is on.



## LED Indicator

LED Color	Status	Description	Action
Blue LED	Solid	Power on	N.A.
	Flashing	Filling/Pumping	N.A.
	Flashing quickly for a short time**	The fail-safe sensor detects the water level changes.	N.A.
Red LED*	Flashing	QST alarm: 1. Bubble interference 2. Empty reservoir	1. Clean the sensor or move it to an area away from micro bubbles. 2. Refill the reservoir.

\*Please follow the instruction above to fix issues and then unplug the power and plug it back in.

\*\*For very small aquariums, the top sensor may be triggered after each top off. This is normal and no action is required.

## Specifications

- Power Input : 100-240 VAC 50-60 Hz
- DC Pump :
  - Head : 8.2 feet (250 cm)
  - Flow Rate : 74 gph (280 lph)
- Max. Mounting Thickness : 1/2 inch (12.7 mm)

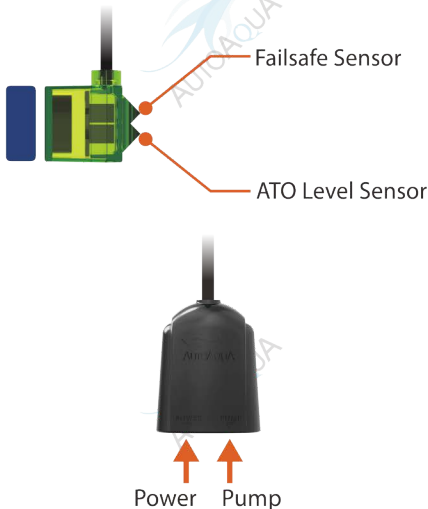
## Quick Security Technology (QST)

Smart ATO Lite G2 uses QST for real-time protection against any failure situation. The controller will give a visual alert when it senses any other refilling time is 6 times longer than the first refilling time.\*

QST can detect the malfunction of the sensor or the controller, and the empty reservoir to avoid the pump running dry. For example, if the first refilling time is 10 sec, it will alert when any other refilling time is over 60 sec.

**\*Note : No security time control for the first refilling.**

## Controller & Square Dual Sensor



## Limited Warranty

1. Limited warranty is provided by AUTOAQUA only if your AUTOAQUA Product ("Product") was purchased from an authorized distributor or an authorized reseller.
2. All warranty repairs or replacement are performed by the authorized distributor or authorized reseller in the region where the Product was first shipped by AUTOAQUA.
3. The limited warranty is valid for a period of 1 year under proper installation and normal use from the date of the original purchase listed on the proof of purchase or sales receipt.
4. In the event of a limited warranty claim, proof of purchase or sales receipt (issued to the original purchaser) is required.

### Purchase Date

(Y/M/D)

### Warranty Period

One year from the purchase date

### Place of Purchase

(Store name, phone, email, address)

### Service

AUTOAQUA Technologies Co., Ltd.  
7F-7.,NO.229,Fuxing 2nd Rd.,Zhubei  
City, Hsinchu County,Taiwan  
E-mail : [service@autoaqua.com.tw](mailto:service@autoaqua.com.tw)  
[www.autoaqua.com.tw](http://www.autoaqua.com.tw)

\* Please go to [AUTOAQUA](http://AUTOAQUA) website to get the distributor information.

